



# Configuration Quick Guide

## R3000 Lite - Dual SIM Industrial

## Cellular VPN Router

### Connect the Router to PC

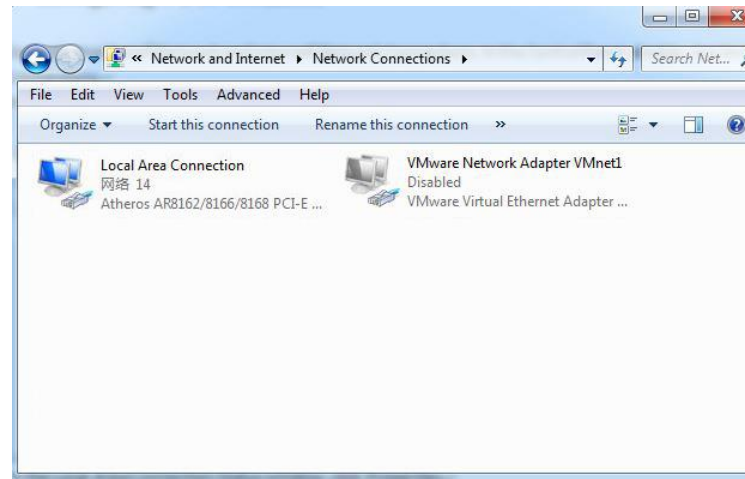
After installing and powering on the R3000 Lite router, connect the router's Ethernet port to a PC through a standard crossed network cable.

### Configuration for the PC

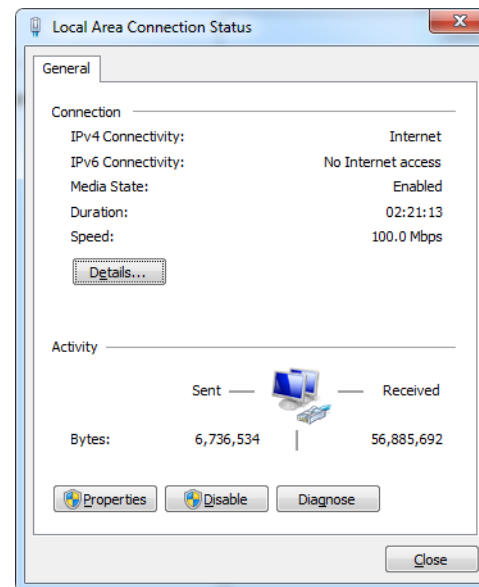
There are two methods to configure the IP address on PC, one is to obtain an IP address automatically from Local Area Connection, and another is to configure a static IP address manually within the same subnet of R3000 Lite router.

**Window 7 System** (the configuration for Windows system is similar)

1. Click **Start > Control panel** (in classic view), double-click **Network and Sharing Center**, and then double-click **Local Area Connection**.

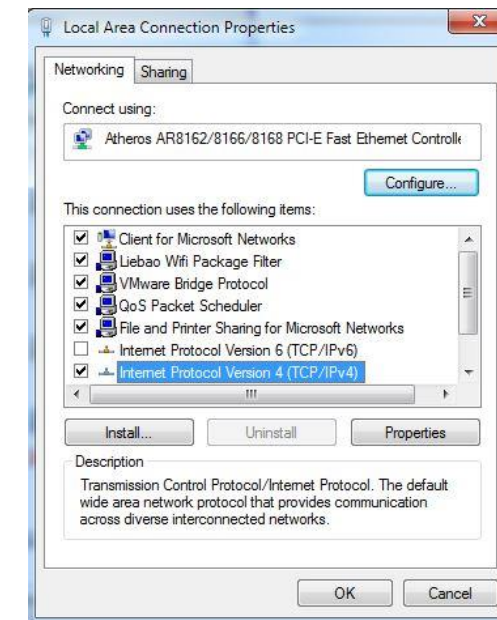


2. Click **Properties** in the window of **Local Area Connection Status**.

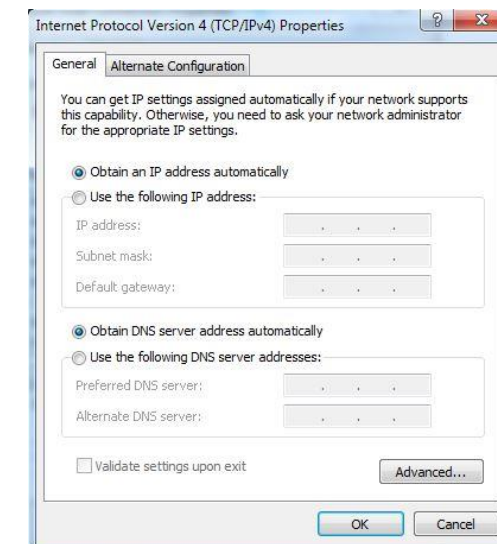


3. Select **Internet Protocol Version 4 (TCP/IPv4)** and click

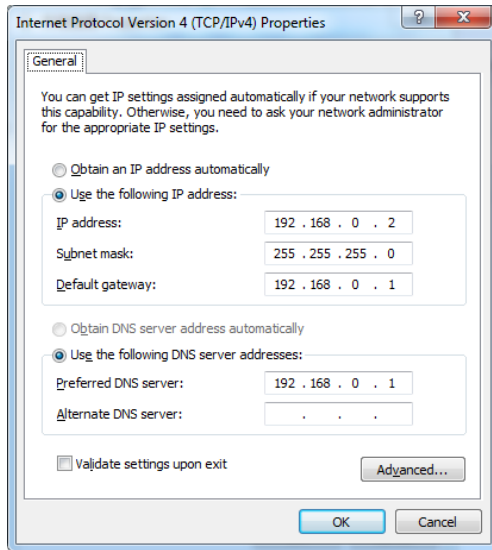
### Properties.



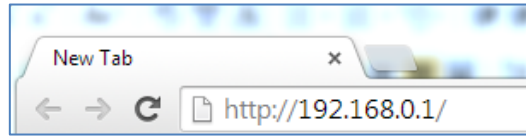
4. Two ways for configuring the IP address of PC  
**Obtain an IP address automatically:**



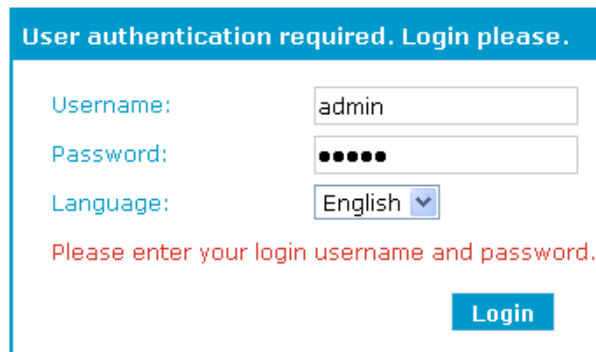
Use the following IP address (configured a static IP address manually within the same subnet of R3000 Lite router):



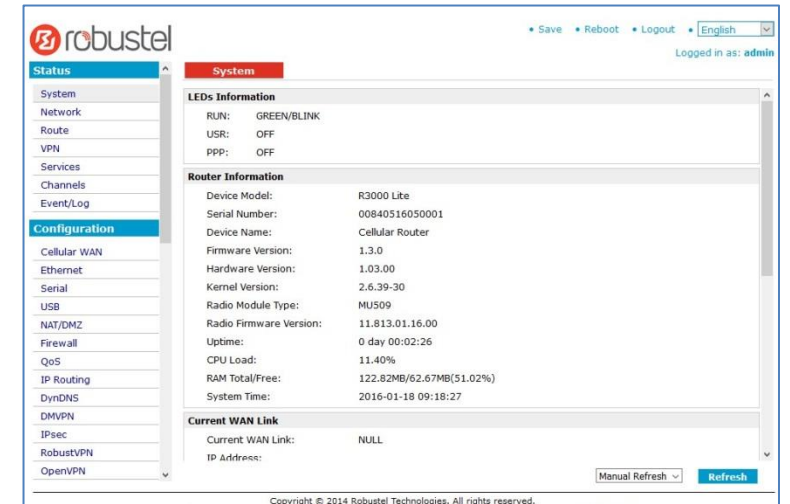
of the SIM card in the browser's address bar, so that to access the R3000 Lite router wirelessly by this public IP.



- In the login page, enter the username and password of R3000 Lite router, choose language and then click **Login**.



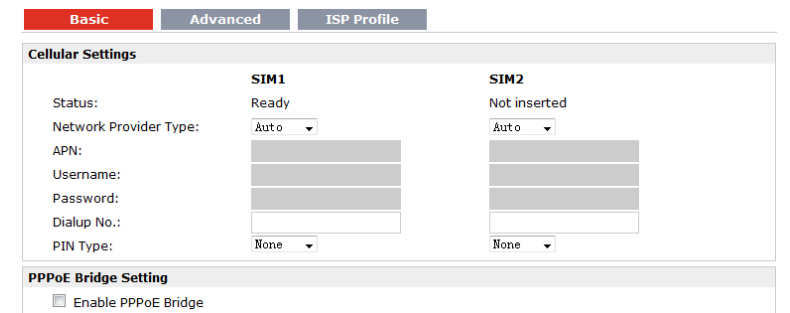
- The home page of the R3000 Lite router's web interface is displayed. For example:  
**Note:** To configure parameters should follow this order **modify parameter 1 > Apply > modify parameter 2 > Apply > Save > Reboot**.



## Configuration for Cellular Connection

Configuration > Cellular WAN > Basic > Cellular Settings

Select **Network Provider Type** as **Auto** or **Custom** (The default is **Auto** and doesn't need to configure. The special network type or special application can choose the **Custom**). When using the private network SIM card or specific SIM card, it needs to choose the **Custom** and enter the parameters such as access point, username, password and outgoing call etc.



- Click **OK** to finish the configuration.

## Configuration for the Router

### Logging in the Router

- On the PC, open a web browser such as Internet Explorer, Google and Firefox etc.
- From your web browser, enter the IP address of the router. The default IP address of R3000 Lite router is 192.168.0.1, though the actual address may vary  
**Note:** If a public SIM card is inserted in the R3000 Lite router, you can enter the corresponding public IP address

## Check the Cellular Connection Status

### Status > System > Current WAN Link

Check the cellular connection information and confirm whether the Router has obtained the IP address. If the router has obtained the IP address, it means it is connected to the cellular network.

Current WAN Link	
Current WAN Link:	Cellular
IP Address:	10.137.24.100
Gateway:	192.168.254.254
NetMask:	255.255.255.255
DNS Server:	210.21.4.130, 221.5.88.88
Keepalive PING IP Address:	8.8.8.8, 8.8.4.4
Keepalive PING Interval:	30

## Configuration for the IP of LAN

The default Ethernet IP address of R3000 Lite router is 192.168.0.1. There are two methods for configuring the IP addresses of the router, webpage configuration and CLI command configuration. Here mainly introduces the webpage configuration method.

### Configure LAN

#### Configuration > Ethernet > Eth 0 > LAN Interface

Enter the parameters such as IP address, the subnet mask etc. And click **Apply > Save > Reboot** to make the configuration take effect.

LAN Interface	
IP Address:	172.16.99.9
NetMask:	255.255.0.0
MTU:	1500
Media Type:	Auto-negotiation

Multiple IP Address	
IP Address	NetMask
	<input type="button" value="Add"/>

## FAQ

### 1. The Eth LED indicator is off when connected the PC to the R3000 Lite router via Ethernet cable.

- 1) Check whether the device is powered on;
- 2) Check the cable connection;
- 3) Change another Ethernet cable for testing;
- 4) Change another PC for testing to confirm whether the NIC has problems;
- 5) If possible, change another R3000 Lite for testing to confirm whether the current R3000 Lite works.

### 2. Connected to the R3000 Lite router successfully and obtained the IP address automatically, but failed to login the webpage.

- 1) Check whether the LED green light of the current connected port is on. If not it means the cable connection has problems;
- 2) Check whether another DHCP server or host occupies the IP address within the same LAN and causes IP conflict. If yes, connect the R3000 Lite router to the PC directly to modify the IP address pool of DHCP.

- 3) Please confirm whether the DHCP function has been closed factitiously if this is not the first use of this R3000 Lite router. If yes, configure the IP address of the PC's LAN interface manually to make the R3000 Lite router and the PC can access each other in the same LAN; or restore to the factory default settings of the R3000 Lite router via the Reset button.
- 4) Check the firewall of the R3000 Lite router to confirm whether the access is restricted or the HTTP protocol is closed. Please restart the firewall.

### 3. What to do if I forget the IP address of the R3000 Lite router?

- 1) Connect the R3000 Lite router's serial port to the PC; open the CLI command interface on PC, and then use the "show" command to check the IP address of the Ethernet port.
- 2) Press and hold down the RST button in about 1 minute to restore to the factory default settings of R3000 Lite, and then enter "192.168.0.1" in the webpage.